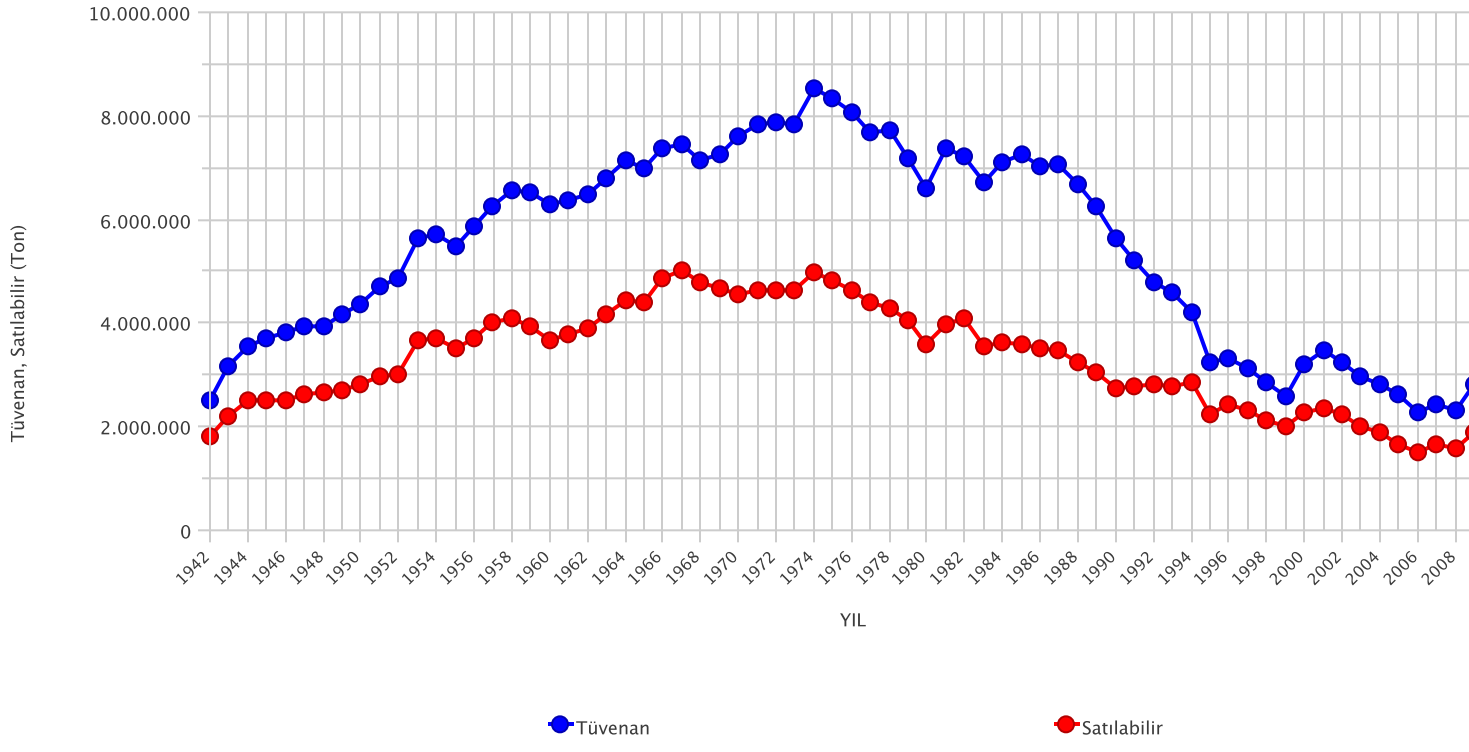


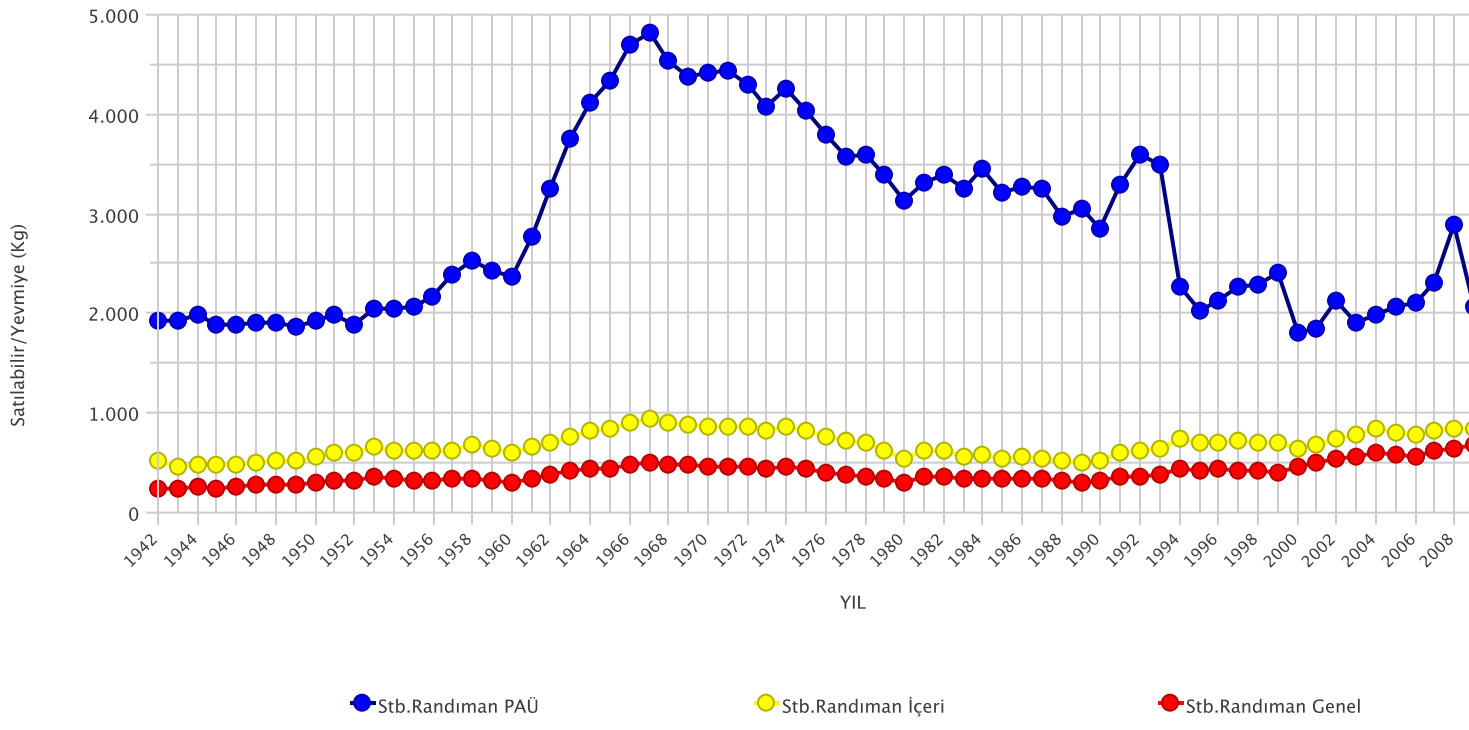
YILLIK RANDIMANLAR

YIL	Tüvenan	Satılabilir	PAÜ Sayısı	İçeri İşçi Sayısı	Yerüstü İşçi Sayısı	Toplam İşçi Sayısı	Stb.Randıman PAÜ	Stb.Randıman İçeri	Stb.Randıman Genel
1942	2.509.614	1.813.743	3275	12500	14626	27136	1933	519	239
1943	3.162.605	2.211.905	4096	16944	16280	33224	1933	467	238
1944	3.554.279	2.493.034	4494	18222	17160	35382	1986	488	252
1945	3.718.772	2.524.056	4799	19059	18021	37080	1883	474	244
1946	3.830.245	2.525.581	4794	18475	16516	34991	1886	491	258
1947	3.945.119	2.623.315	4915	18867	15689	34556	1911	497	272
1948	3.930.637	2.668.985	5016	18236	15164	33400	1905	522	285
1949	4.181.375	2.705.941	5197	18183	15740	33923	1864	532	286
1950	4.360.598	2.832.243	5276	18233	15223	33456	1925	556	303
1951	4.729.589	2.987.846	5360	18125	14592	32717	1996	598	327
1952	4.846.342	3.010.312	5717	17706	14723	32429	1885	607	331
1953	5.654.326	3.664.314	6420	20002	15652	35654	2043	656	368
1954	5.711.253	3.690.124	6474	20990	17809	38799	2041	629	341
1955	5.495.697	3.500.219	6061	20288	19650	39938	2068	618	314
1956	5.887.530	3.717.718	6133	21254	19778	41032	2170	618	324
1957	6.259.057	4.011.494	6020	23203	18755	41958	2386	629	342
1958	6.550.218	4.074.887	5759	21814	20380	42194	2533	676	346
1959	6.515.148	3.941.479	5692	22682	21105	43787	2437	650	322
1960	6.307.057	3.652.959	5507	22727	20316	43043	2375	606	303
1961	6.381.929	3.772.581	4869	22229	17123	39352	2774	658	343
1962	6.485.282	3.892.767	4295	21428	15897	37325	3245	703	373
1963	6.793.430	4.152.938	3959	21047	15054	36101	3756	761	412
1964	7.140.891	4.448.813	3876	21063	14568	35631	4109	823	446
1965	7.006.998	4.389.529	3625	20492	14663	35155	4336	848	447
1966	7.368.942	4.880.419	3712	21388	14946	36334	4708	907	481
1967	7.456.744	5.030.864	3742	20881	14822	35703	4814	949	505
1968	7.149.223	4.768.771	3757	20653	14639	35292	4545	909	483
1969	7.243.260	4.683.647	3833	20585	14589	35174	4375	885	477
1970	7.598.316	4.572.966	3634	20196	14475	34671	4422	865	469
1971	7.846.499	4.638.721	3625	20714	14936	35650	4432	854	461
1972	7.862.422	4.641.461	3721	20782	15372	36154	4303	854	457
1973	7.841.542	4.642.394	3992	21393	16198	37591	4068	829	443
1974	8.545.927	4.965.469	4098	22274	17125	39399	4261	854	455
1975	8.355.283	4.812.934	4119	22498	17504	40002	4042	814	433
1976	8.059.282	4.631.854	4184	23072	18702	41774	3793	760	397
1977	7.665.937	4.405.396	4296	23736	19048	42784	3568	717	375
1978	7.741.311	4.295.237	4180	23755	18317	42072	3593	700	370
1979	7.199.786	4.051.331	4187	23802	18121	41923	3386	619	338
1980	6.598.755	3.597.628	3897	24230	17697	41927	3135	536	306
1981	7.387.892	3.970.139	4053	23569	16366	39935	3314	615	369
1982	7.222.871	4.108.382	3986	23427	15382	39259	3397	627	371
1983	6.725.000	3.539.091	3823	23398	15254	38652	3244	555	335
1984	7.103.413	3.631.706	3633	23047	14598	37645	3444	574	348
1985	7.260.083	3.605.416	3842	23828	14403	38231	3215	540	342
1986	7.015.292	3.526.283	3601	22203	14354	36557	3278	564	347
1987	7.084.479	3.460.889	3549	22388	14235	36623	3246	541	340
1988	6.687.948	3.255.645	3726	22618	13858	36476	2963	513	327
1989	6.258.784	3.038.448	3539	21868	13624	35492	3048	494	308
1990	5.628.747	2.745.242	3930	21024	13325	34349	2859	526	328
1991	5.209.140	2.761.710	3363	18338	12877	31215	3285	602	352
1992	4.790.719	2.829.166	2955	17003	12492	29495	3591	625	352
1993	4.608.668	2.788.788	2957	16592	11837	28429	3501	648	374
1994	4.210.780	2.838.548	4541	14427	9537	23964	2268	739	443
1995	3.251.570	2.248.175	4486	13348	8172	21520	2032	700	428
1996	3.320.122	2.441.096	4193	13028	7375	20403	2134	705	450
1997	3.118.688	2.320.132	3770	12277	6397	18674	2261	715	416
1998	2.865.838	2.136.120	3490	11684	5722	17406	2299	708	415
1999	2.601.175	1.989.572	3042	10898	5282	16180	2415	694	407
2000	3.196.971	2.259.227	6022	14588	4563	19151	1810	650	470
2001	3.492.105	2.356.865	4938	13425	4600	18025	1856	679	502
2002	3.246.627	2.244.372	4597	11761	4000	15761	2128	742	548
2003	2.954.334	2.011.178	4279	10339	3723	14062	1913	775	563
2004	2.804.244	1.879.411	3861	8932	3329	12261	1980	834	601
2005	2.620.712	1.665.324	3277	8200	3049	11249	2074	810	583
2006	2.296.892	1.522.421	2936	7669	2942	10611	2105	784	569
2007	2.423.719	1.675.373	2971	7983	2582	10565	2302	832	628
2008	2.335.457	1.586.532	2309	7391	2294	9685	2892	852	650
2009	2.833.243	1.879.630	3678	8754	2225	10979	2064	843	676

YILLIK TÜVENAN ve SATILABİLİR ÜRETİMLER



YILLIK SATILABİLİR RANDIMANLAR



YILLIK ORTALAMA İŞÇİ SAYILARI

